

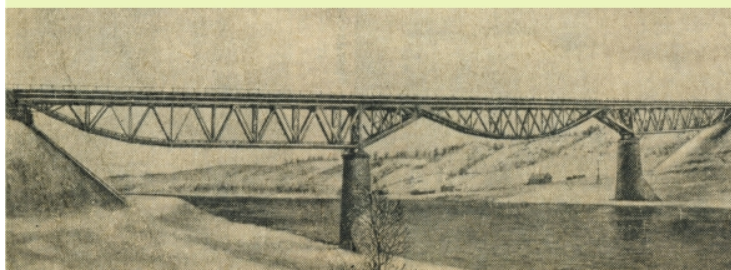
# Alytus

## Pedestrian and bicycle bridge The White Rose (Baltoji Rožė)

The highest pedestrian and bicycle bridge in Lithuania (author of the design V. Karieta) which was constructed in 2015 on the remaining supports of a former railway bridge and is inscribed into the Book of Records of Lithuania. Its height is 38.1 metres, and its length – 260 metres.



In the second half of the 19th century, as the Western borders of the Russian Empire (Lithuania belonged to its territory at the time) were strengthened, a military railway was constructed to Alytus as a class III fortress. In 1897–1899 in this particular place a bridge of innovative cantilever structure was built (author of the design N. Bebeliubskij). The height of the bridge was 33 metres, while its length – 240.5 metres. The carriageway of the bridge was intended for trains and carriages.



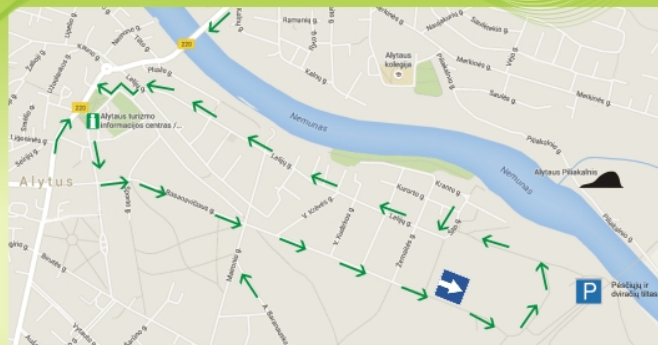
During World War I, in 1915, a retreating army of the tsar exploded the bridge. The Germans who occupied Alytus built a temporary wooden military railway bridge instead of the former one. The height of the new bridge was 35 metres, and its length – 294 metres. The bridge served its purpose until 1926, and subsequently it was dismantled.



In August 2013, construction of a new stressed ribbon three-stage bridge started. Trusses of the bridge were manufactured in Latvia and assembled on a construction site. Metal structures were placed on supports by experts of the company Mammoet. Construction of the bridge was completed in October 2015.



## How to reach the bridge



### Alytus Tourism Information Centre

S. Dariaus ir S. Girėno g. 1, LT-62137 Alytus

Tel.: +370 315 52 010, +370 687 07 703

info@alytus-tourism.lt

www.alytus-tourism.lt



Photos: G. Bernatavičius, B. Malaškevičiūtė, archive of Alytus Tourism Information Centre.